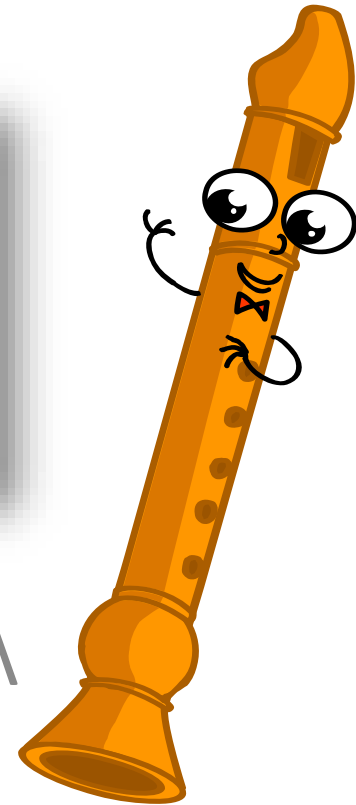


Οι πρώτες μας μελωδίες στον αυλό



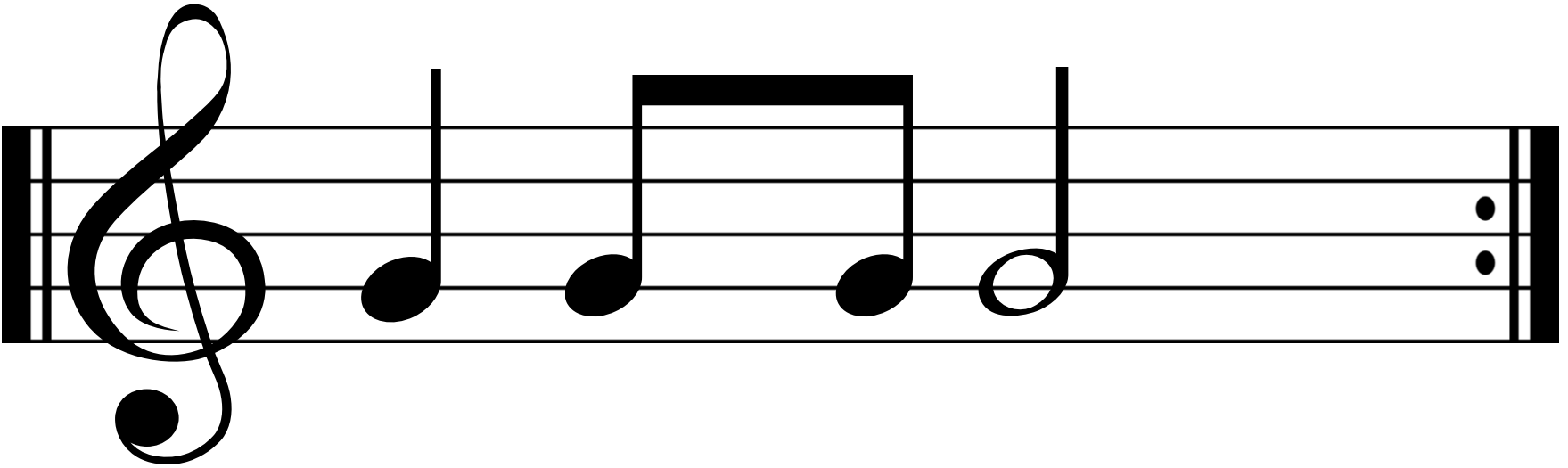
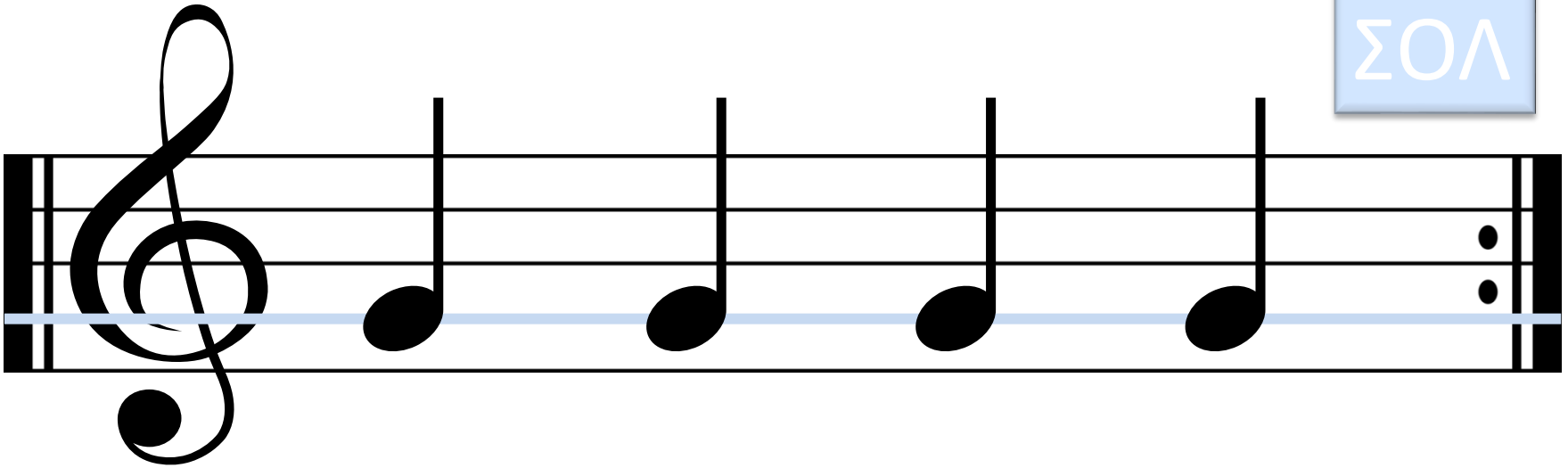
Νότες: ΣΙ, ΛΑ, ΣΟΛ

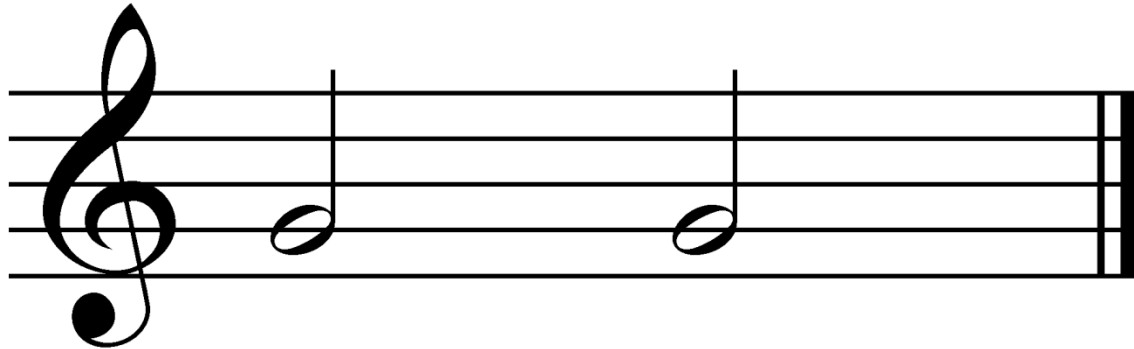
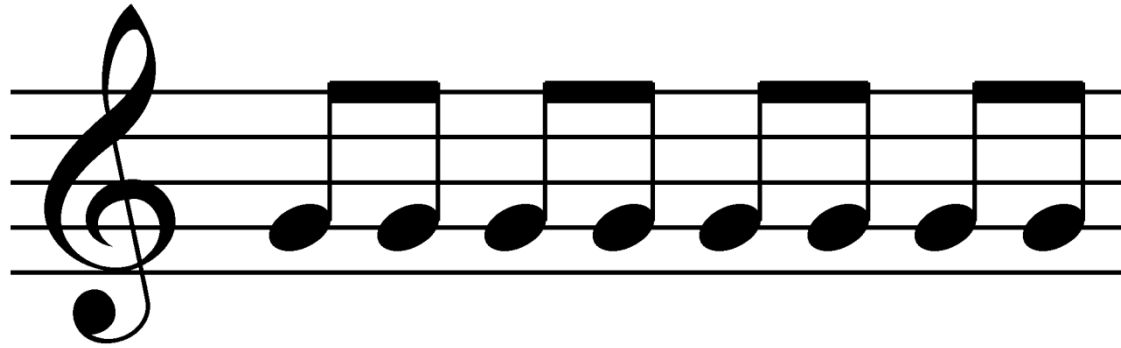
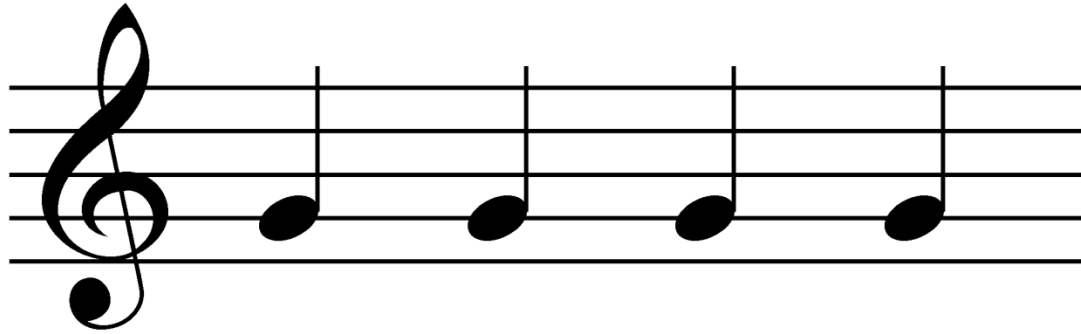






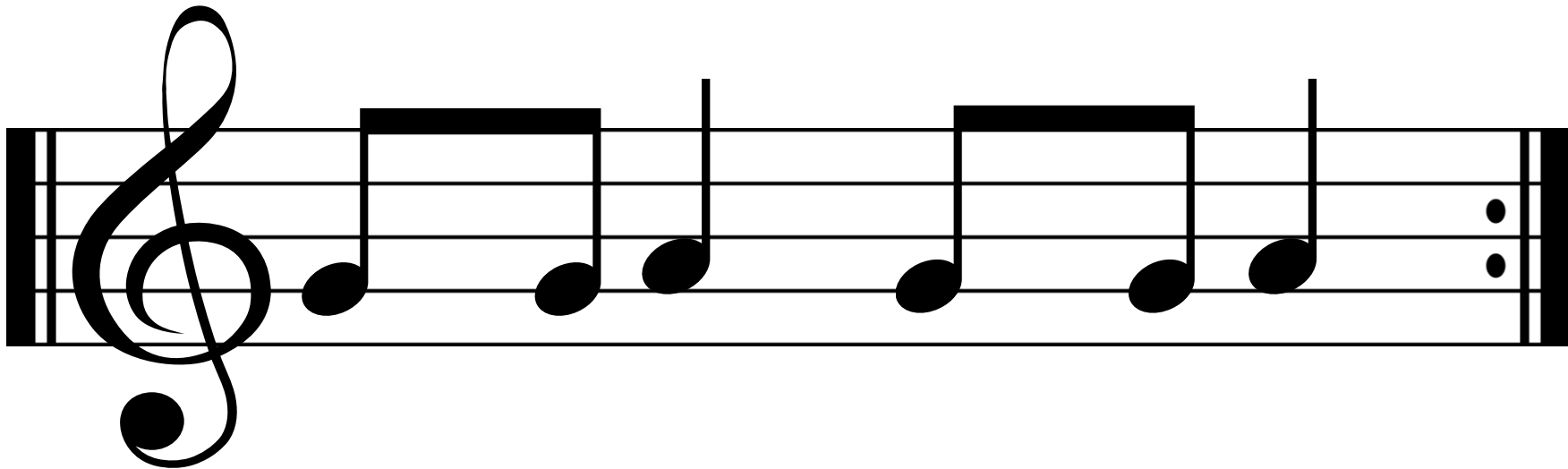
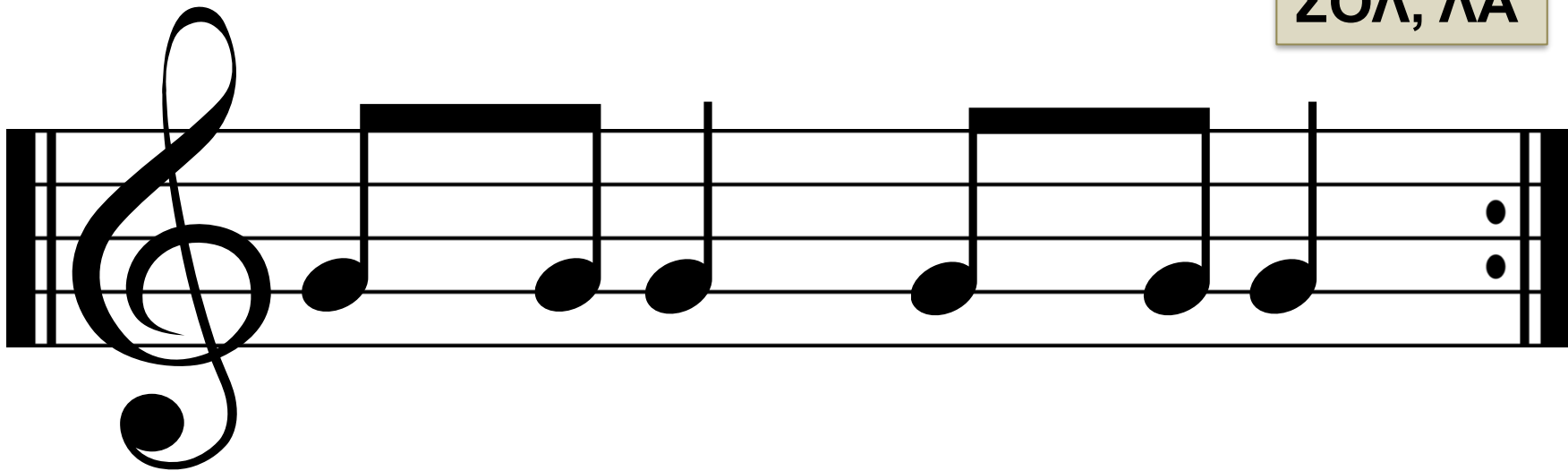
ΣΟΛ



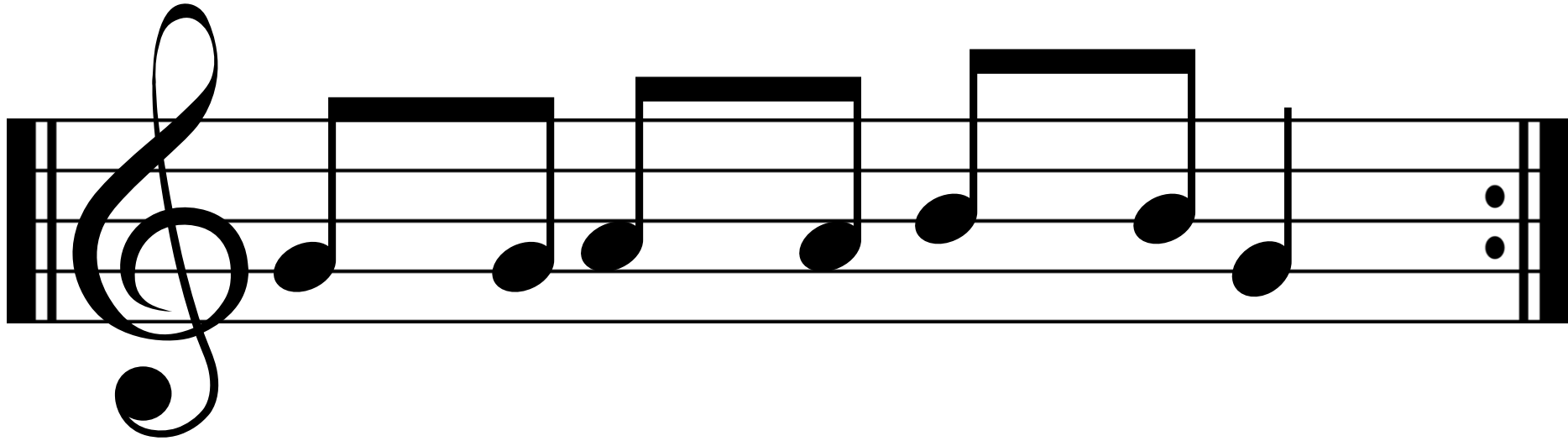
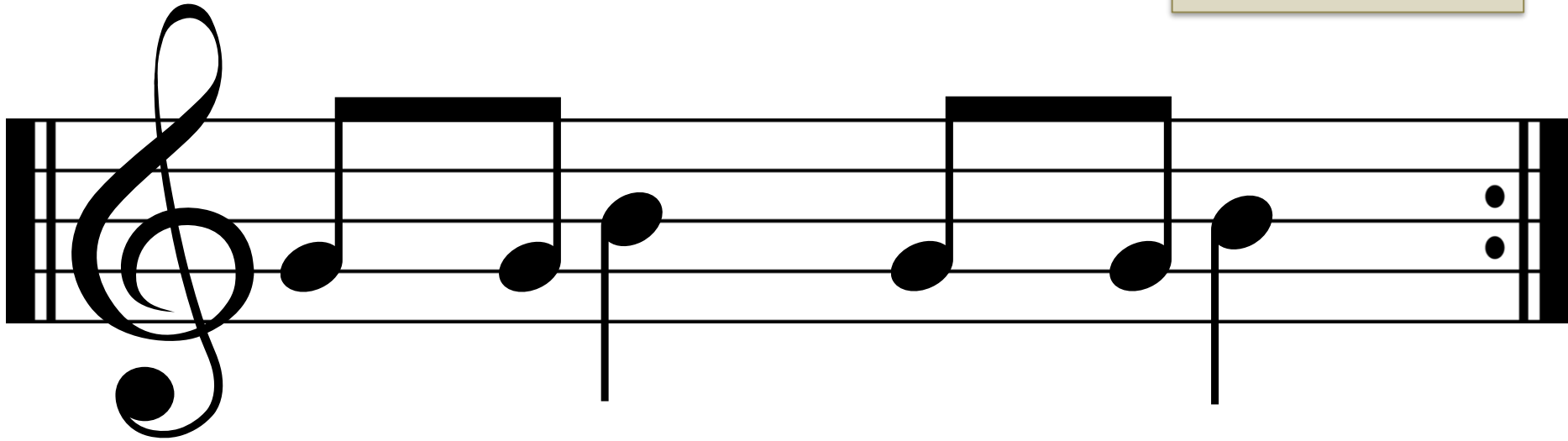


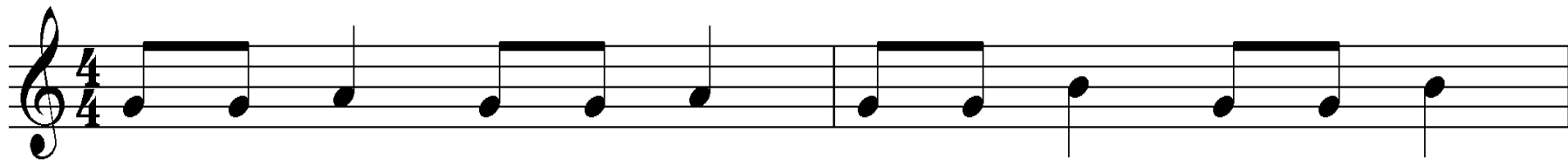
Παίζουμε όλες τις αξίες που ξέρουμε με τη νότα ΣΟΛ.

ΣΟΛ, ΛΑ



ΣΟΛ, ΛΑ, ΣΙ





Αυτή η άσκηση είναι δύσκολη!



Με πολλή
εξάσκηση
όλα γίνονται
εύκολα!

